

Florence County Government

Procurement Department

June 11, 2015

ADDENDUM NO. 1- COWARD BALL FIELDS (BID NO. 32-14/15)

Florence County is sending to all interested firms clarification information and answers to frequently asked questions (FAQs) concerning this request for proposal. These questions were brought up at the Pre-Construction meeting on June 9, 2015. The answers are highlighted in blue and underlined. Please include this sheet with your proposal.

1. What type of grass will be required for sprigging the fields? Florence County Parks & Recreation has been using S&R Turf in Galivants Ferry, SC to supply and install the grass for their fields for the last few years. The type of grass is Tipton Bermuda 419. The grass type is required; the supplier can be an equivalent.
2. How will the grass be irrigated, and who is responsible for watering the grass? The scope of this project does not include an irrigation system. The Contractor is responsible for providing a 70% stand of grass per DHEC requirements, therefore the Contractor will be ultimately responsible for maintaining and watering the grass until a 70% stand is achieved. For bidding purposes, assume that watering will take 60 days after sprigging. Also assume that the Contractor will be responsible for providing the water, pumps, hoses, etc. for watering the grass during this temporary period. An item for this was added under grassing on the Bid Sheet.

At that point the County will evaluate the fields and coordinate the next steps with the Contractor.

See also Item #7 below regarding an Alternate Bid Item for Irrigation.

3. What is the project time line? Per the updated Page 2 of the Bid Sheet (attached), the project is expected to last 90 days. This does not include watering and maintenance of the grass.

4. Where are the bid quantities on page 2 of the Bid Sheet? An updated Page 2 is attached; it includes the bid quantities.
5. There is a discrepancy between the drawings and the amount of 24" RCP shown on page 2 of the Bid Sheet. On Sheet 8 (the Grading & Drainage Plan) there is a stretch of 24" RCP along Trash Road. It parallels the ditch for 696 feet and connects the pond outfall at CB#3 directly to US Highway 52.

This RCP has been value engineered out of the project and is not part of the bid. 688 feet of this pipe, as well as JB#1 and JB#2, do not appear on the Bid Sheet quantities and will not be installed. Likewise, 700 feet of silt fence has been removed.

The 24" RCP will leave CB#3 and go directly to the ditch (see Figure 1-1, attached). Please note that the rip rap apron at the end of the pipe at Hwy 52 will be moved to the new end-of-pipe in the ditch.

6. How does the County intend to construct the infields? The County has requested that the Contractor cut the infields down to subgrade (assuming that the County will add 4 to 6 inches of sand clay) and leave it ungrassed. This is for both Field #1 and Field #2, see attached Figure 1-2. The infield areas are marked in red, they total 2100 cubic yards. This is accounted for in the updated Bid Sheet.
7. Alternate #1: Figure #1-3 shows an alternate for placing 1-1/2" PVC pipe in the ground for irrigation purposes. The pipe will have 24" of cover and run from the edge of the gravel parking lot to the center of the ball fields. The purpose is for temporary irrigation, though the pipe would remain in place to help with irrigation on the future ball fields as well. The line would have stub-outs as shown, each would be 1" diameter and have a 1" gate valve closure.

The east end would stub out near the location shown. The County may negotiate a deal with the City of Coward to tie into that line with City water, otherwise the line would be used to pump water from the pond and reduce the movement of hoses across the new fields.

Alternate #1 involves installation, materials, and testing of the PVC pipe. Tapping, meters and backflow prevention will be handled by the County if they decide to tie the line into City water.

Sincerely,

A handwritten signature in cursive script that reads "Patrick D. Fletcher".

Patrick D. Fletcher, CPPB
Procurement Director

COWARD BALL FIELDS

Coward, SC

ITEM	GRADING / SITE-WORK	UNIT	QUANTITY	UNIT PRICE	COST
G2	Rough Grading (Stripping Topsoil, surface work)	SY	13,980		
G3	Rough Grading (Cut & Fill)	CY	1,281		
G5	Fine Grading (Surface)	SY	20,821		
G11	Topsoil (Placement onto fields 4" min thickness)	CY	2,500		
G30	Grassing (all disturbed areas except fields)	SY	9,060		
G31	Sprigging (grass for fields)	SY	6,800		
G31a	Watering & maintenance of grass	LS	1		
G32	Site Work Construction Staking (incl pond)	LS	1		
SUBTOTAL=					
ITEM	EROSION & SEDIMENT CONTROL	UNIT	QUANTITY	UNIT PRICE	COST
EC1	Construction Entrance	EA	1		
EC2	Reinforced Silt Fence	LF	1,500		
EC3	Type A Inlet Protection	EA	2		
EC4	Sediment Pond Porous Baffles	LF	180		
EC5	Sediment Pond 8" Skimmer	EA	1		
EC7	Pond Topsoil Stripped & Stockpiled	SY	5,013		
EC8	Pond Excavation (includes fine grading)	CY	3,356		
EC9	Pond Topsoil (Placement from Stockpile)	CY	660		
EC17	Pond bank grassing	SY	5,100		
EC18	Pond enclosure fence (4' chain link w/ gates)	LF	1,000		
SUBTOTAL=					
ITEM	STORM DRAINAGE	UNIT	QUANTITY	UNIT PRICE	COST
SD4	Concrete Catch Basins (30"x30")	EA	1		
SD7	18" RCP	LF	60		
SD8	24" RCP	LF	120		
SD12	Rip-Rap Apron (w/ Filter Fabric)	TON	20		
SD15	Pond Outfall Structure	EA	1		
SD16	Drainage Construction Staking	LS	1		
SUBTOTAL=					

Total Bid =

ITEM	ALTERNATES	UNIT	QUANTITY	UNIT PRICE	COST
ALT1	Irrigation PVC	LS	1		
SUBTOTAL=					

Attach Bidders statement of qualification of experience.

Maximum time of completion from receipt of purchase order: _____ Calendar Days.



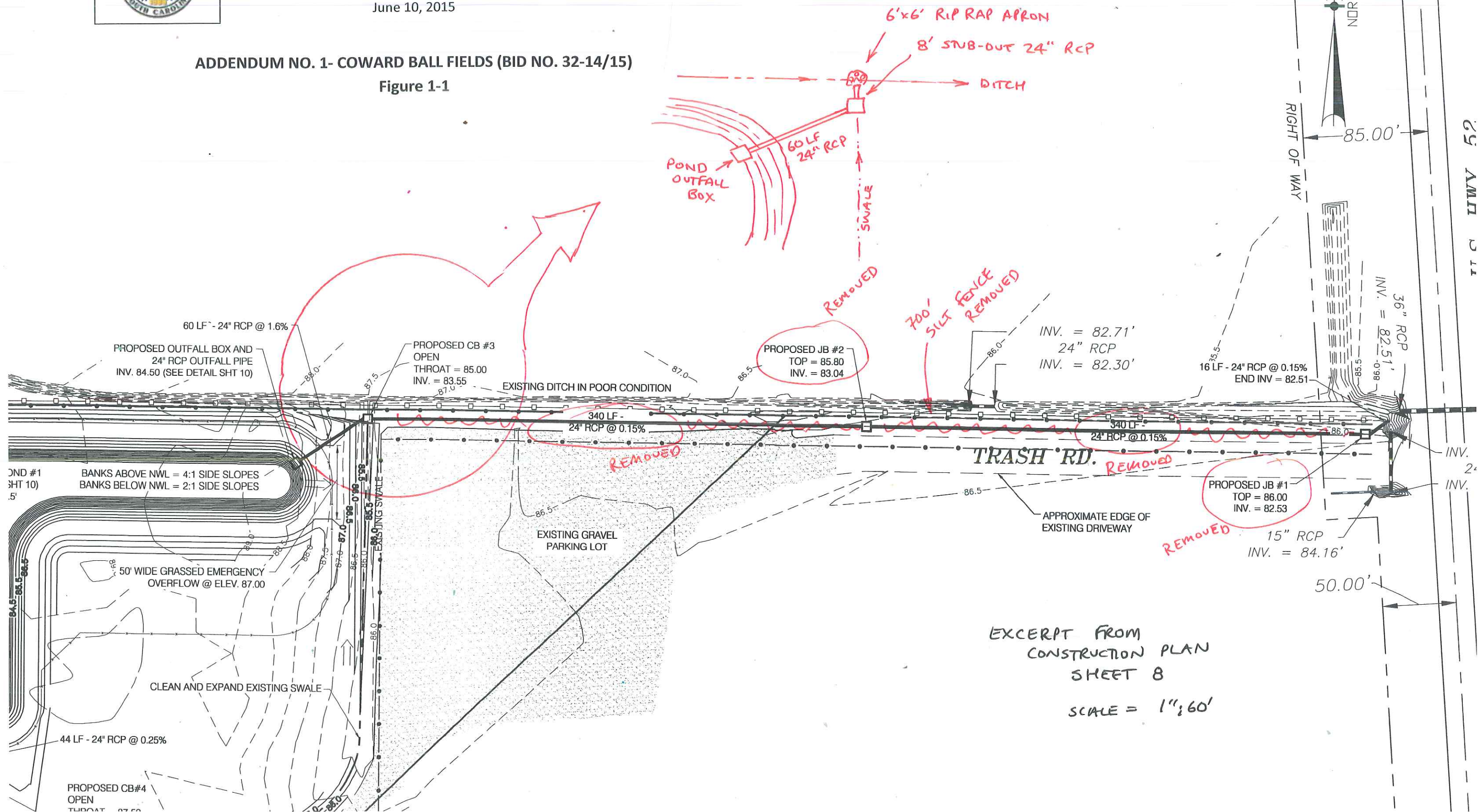
Florence County Government

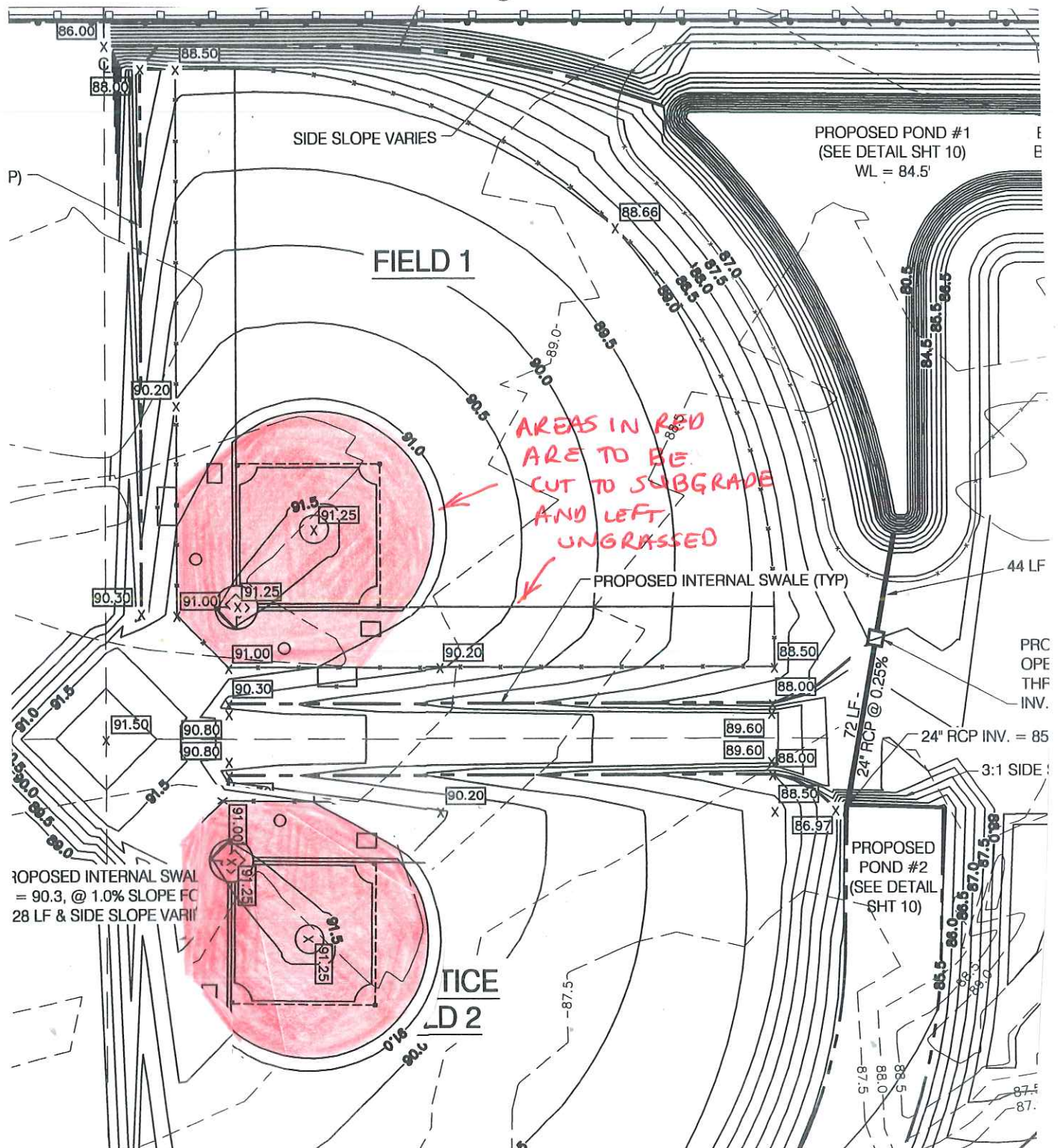
Procurement Department

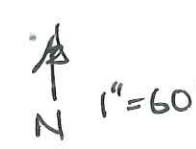
June 10, 2015

ADDENDUM NO. 1- COWARD BALL FIELDS (BID NO. 32-14/15)

Figure 1-1







○ APPROXIMATE STUB-OUT LOCATIONS:
1 1/2" TEE W/ BUSHING TO 1" PVC
1" GATE VALVE & CAP

ALTERNATE 1