



*Florence County Government*  
Procurement Department

July 1, 2015

**ADDENDUM NO. 2- JOHNSONVILLE BALL FIELDS (BID NO. 34-14/15)**

**Answers to Questions from the Pre-Bid Meeting held on 6/25/15. The answers are in BOLD RED.**

1. Will the topsoil need to be screened before final placement? **Not necessarily. The Specifications call for the topsoil to be “free of roots, rocks larger than 1/2 inch, subsoil, debris, large weeds and foreign matter.” A good root raking followed by a walk-through to remove surface rocks/roots may be enough to achieve this.**
2. Does the existing site topsoil meet the recreational facilities needs or will it need to be tested and import the appropriate topsoil for the 4" root zone? **No need for testing; the site topsoil is suitable for the project.**
3. May we burn the grubbing materials? **Yes, per the specs.**
4. Will there be any testing requirements for the soils, stone, paving? If so who incurs the cost? **Florence County will be responsible for all the testing involved in the special inspection requirements. There will be a proof roll on all parking and drive areas, and compaction tests per the County regulations for the drive areas. Compaction tests may also be required on the sidewalks, depending on the soil encountered.**
5. May concrete be used for the sidewalks instead of asphalt? **Yes. However, if the sidewalks are changed to concrete, all asphalt-paved areas should be concrete, for continuity. The drive aprons must stay asphalt, per SC DOT. The sidewalks would be 4" thick, the HC parking areas 6" thick. Concrete would be 3000 psi fiber-reinforced. Make note that it is concrete, and put the cost under *asphalt paving* so we don't need a new line item.**
6. Are the parking lines shown on plans just for the planning purpose only? **Yes, but the HC parking areas will need the appropriate striping & symbols.**
7. Do we need to provide as-builts of the site? **Yes, per SC DHEC regulations we need the inverts of all RCPs, catch basin rims & inverts, and key points in the swales (ends and turning points). In addition, we would like the new manhole inverts and the water & sewer service locations.**

8. Who will be required to provide layout work at the completion of the job for fences, bases, etc. for field use? **This is a separate project under a separate bid. The Recreation Department may be doing a portion of the work, or possibly the Leagues. They will use the layout from the drawings. We assume that a surveyor would be utilized to stake it out initially.**
9. Will Florence County require the proof roll on the parking /drive areas? **Yes, everything that has rock or paving on it is to be proof rolled.**
10. Who is testing the water? **The Contractor is responsible for testing the new water service. The City of Johnsonville owns the water system.**
11. Should bid item RP12 & 13 be combined? **No, this is in case we would like to break out/change the materials.**
12. Will you provide a locked Excel bid schedule? (The current layout is too small to write inside) **No. We will provide an updated schedule with a larger area for writing and horizontal lines.**
13. Who does the locate for the existing utilities? (Basically - who calls PUPS) **The contractor calls before he digs as per the plans.**
14. Does the 120 day limit include the sprigging? **No, this includes the land grading, lots, paving, utilities and seeding.**
15. Please update the drawing with a sheet outlining the sand-clay limits that the County will be providing. **Please see attached sketch. The entire infield will be sand clay (no grass diamond in the center). Leave 4" for the sand clay thickness; this corresponds with the 4" of topsoil in the outfield to make grading easier. As for complete dimensions, see the web site [www.youth.dixie.org](http://www.youth.dixie.org) for the 225' field and [www.baseball.dixie.org](http://www.baseball.dixie.org) for the 325' field.**
16. Will there be irrigation? If not the sprigging will be difficult to guarantee 70% coverage and expensive, to cover the contractor. **After a few conversations on the subject, the County has decided to remove Sprigging from the project scope. The time lines do not mesh, as sprigging cannot happen until May or June. But we would like to have some grassed fields for the 2016 season. We have the option of grassing anywhere from one to five fields depending on the County's available resources. So we are adding two Alternates:**

**Alternate 1: Per field cost for seeding a single playfield with a winter rye mix at a 150% density (overseeding), and watering/irrigating the field for 60 days. The County provides the water and the Contractor provides equipment, tie-ins, hoses and irrigation.**

**1A: one of the 225-foot fields (4,625 square yards of grassed area)**

**1B: the 325-foot field (9,372 square yards of grassed area)**

County Complex

180 N. Irby Street MSC-R, Florence, SC 29501 Telephone (843) 665-3018 ext – 54149 Fax: (843) 664-9668

**Alternate 2:** Per field cost of the installation of an underground irrigation system, followed by seeding a single playfield with a winter rye mix at a 150% density (overseeding), and irrigating the field for 60 days. The County provides the water and the Contractor irrigates.

**2A:** one of the 225-foot fields (4,625 square yards of grassed area + 1,070 sq ft of clay infield)

**2B:** the 325-foot field (9,372 square yards of grassed area + 1,675 sq ft of clay infield)

The County is evaluating their resources, and will choose either Alternate 1 or 2, or neither for the various fields. The Bid Tab was revised to reflect this (see attached).

The irrigation system for each field should include approximately 8 sprinkler heads in the outfields and one head in the infield in a protective box. The larger field will probably need 10 heads in the outfield and two in the infield. Assume that there will be a header from the center of the fields (where the water service ends) with a simple timer for controls. This should be enough information to get a general quote for the system.

17. Who will pay for the water for watering the grass? **The County will take care of the cost for water.**
18. What is the lighting installation schedule? The concern is that when the contractor fine grades the property and the lighting people come in to trench and install poles it will mess up the fine grading. **This will be a separate contract that will most likely happen during the winter, after the ball fields have been approved and closed out.**
19. The plans for Johnsonville call out for Asphalt Type B. Will the engineer consider using a Type C mix in lieu of Type B? Type B is more for highway work and will be tough to work with for this application. **Yes. A type C mix is smoother and would better represent the Ball Fields.**
20. Where did the topsoil placement quantity come from? If you spread 4 inches of topsoil across the entire site it would only take 12,100 cys. I am coming up with roughly 9000 cy of topsoil placement, including the outfields and all other grassed areas. Does the 15,280 include stockpiling the excess for future use?  
Also, the Rough Grading (Cut) number is extremely low. I came up with a little less than 15,000 cys of cut.  
**Sorry. This is the way we do our take-offs internally, and the County wanted us to provide unit quantities, so we used what he had. The missing volumes are among the topsoil stripping and placement.**

**We did some double checking on all the numbers and volumes and updated the Bid Sheet accordingly. It is attached.**

**Believe it or not, the site does balance, according to the AutoCAD model. It is based off of the 2002 survey, though, so we do expect changes once we re-survey. If it helps, here are the raw numbers we used for cut/fill:**

**Cut Volume (entire site) = 15,992 cubic yards**

**Fill Volume (entire site) = 19,786 cubic yards**

**Compaction of cut is assumed to be 10% (this is already in these numbers)**

**Import volume (fill – cut) = 3,794 cubic yards**

**However, we are estimating +/- 2,700 cubic yards of GABC coming in for the parking lot, so the site comes close to balancing, with an import volume of around 1000 cy.**

**YOU MUST ACKNOWLEDGE THIS ADDENDUM BY SIGNING BELOW AND SUBMIT IT WITH YOUR BID.**

---

I have read and acknowledged this addendum for bid no. 34-14/15.

---

Authorized Signature

---

Printed Name

---

Date

---

Company Name

# JOHNSONVILLE BALL FIELDS

Johnsonville, SC

ITEM	GRADING / SITE-WORK	UNIT	QUANTITY	UNIT PRICE	COST
G1	Clearing / Stumping	AC	22.5		
G2	Rough Grading (Strip Topsoil)	SY	86,055		
G5	Fine Grading (Ball Fields Surface & Swales)	SY	86,055		
G10	Muck & Fill	CY	unit cost		
G11	Topsoil (Placement from Stockpile 4" thick)	CY	9,562		
G26	Street signs (Stop Signs)	EA	2		
G32	Site Work Construction Staking	LS	1		
SUBTOTAL=					
ITEM	ROADS & PAVING	UNIT	QUANTITY	UNIT PRICE	COST
RP2	Rough Grading (Cut)	CY	9,388		
RP3	Rough Grading (Fill)	CY	18,950		
RP4	Fine Grading (Road & Parking Areas & Sidewalks)	SY	16,874		
RP5	A.B.C. Driveway Aprons (HD 8")	SY	250		
RP8	Aggregate Base Course "A.B.C." (SD 6")	SY	15,184		
RP9	Asphalt Paving Driveway Apron & HC Area (SD 2")	SY	685		
RP11	Gravel Sidewalk	SY	220		
RP12	Asphalt Sidewalk	SY	1,220		
RP13	Sidewalk (6" Sand Clay Base)	SY	1,220		
RP15	Parking Bumpers	EA	4		
RP18	Pavement Markings (Parking Stalls & Hatching)	LF	850		
RP22	Pavement Markings (H/C Symbols)	EA	8		
RP23	Roadway Construction Staking	LS	1		
SUBTOTAL=					

# JOHNSONVILLE BALL FIELDS

Johnsonville, SC

ITEM	EROSION & SEDIMENT CONTROL	UNIT	QUANTITY	UNIT PRICE	COST
EC1	Construction Entrance	EA	1		
EC2	Reinforced Silt Fence	LF	3,170		
EC3	Type A Inlet Protection	EA	1		
EC16	Sediment Tube	EA	40		
EC18	Grassing	SY	58,183		
SUBTOTAL=					
ITEM	STORM DRAINAGE	UNIT	QUANTITY	UNIT PRICE	COST
SD4	Concrete Catch Basins (24"x24")	EA	1		
SD5	Concrete Junction Box (30"x30")	EA	2		
SD7	8" HDPE	LF	120		
SD8	15" RCP	LF	320		
SD9	18" RCP	LF	216		
SD10	24" RCP	LF	70		
SD14	Rip-Rap Apron (w/ Filter Fabric)	TON	3		
SD18	Drainage Construction Staking	LS	1		
SUBTOTAL=					

# JOHNSONVILLE BALL FIELDS

Johnsonville, SC

ITEM	SANITARY SEWER	UNIT	QUANTITY	UNIT PRICE	COST
SS1	Sewer Manhole	EA	1		
SS4	8" PVC Gravity Sewer SDR 35	LF	360		
SS10	Single Sewer Service	EA	1		
SS15	Sewer Construction Staking	LS	1		
SUBTOTAL=					
ITEM	DOMESTIC WATER	UNIT	QUANTITY	UNIT PRICE	COST
DW3	4" C900 Class 100 PVC Water Line	LF	500		
DW6	4" DI Fittings	LB	180		
DW12	Water Tap (6"x4" Tapping Saddle)	EA	1		
DW13	2" Blow-off (complete assembly, incl vault)	EA	1		
DW16	Single Water Service (2" BFP, meter & boxes)	EA	1		
DW18	Water Construction Staking	EA	1		
SUBTOTAL=					

Total =

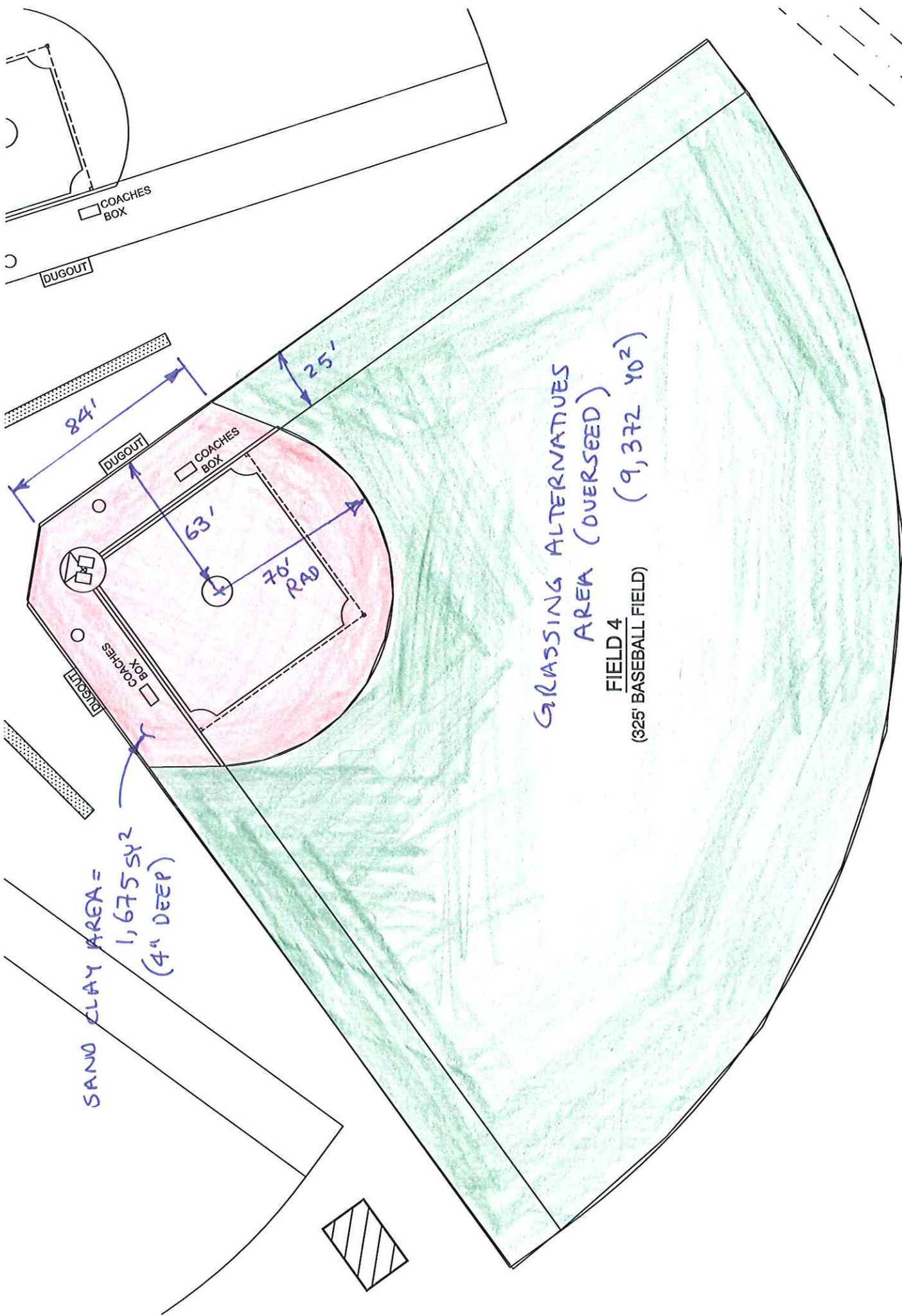
# JOHNSONVILLE BALL FIELDS

## Johnsonville, SC

## Alternates

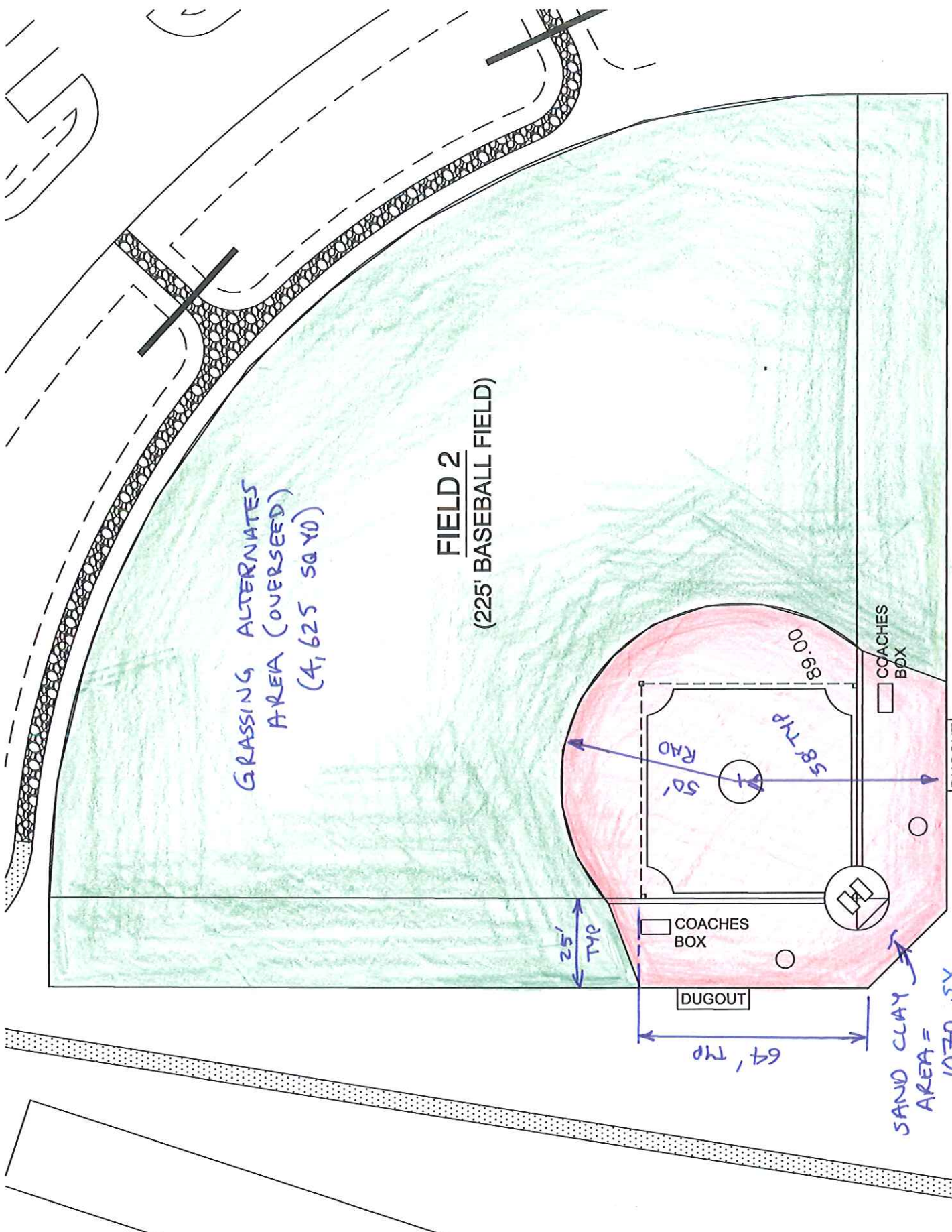
<b>ALT 1</b>	<b>OVERSEEDING &amp; IRRIGATION</b> <b>(cost per field)</b>	<b>UNIT</b>	<b>QUANTITY</b>	<b>UNIT PRICE</b>	<b>COST</b>
1A	225-foot field (Dixie Youth)	EA	1		
1B	325-foot field (Bronco League)	EA	1		
<b>ALT 2</b>	<b>UNDERGROUND SYSTEM, OVERSEEDING &amp; IRRIGATION</b> <b>for 60 days (cost per field)</b>	<b>UNIT</b>	<b>QUANTITY</b>	<b>UNIT PRICE</b>	<b>COST</b>
2A	225-foot field (Dixie Youth)	EA	1		
2B	325-foot field (Bronco League)	EA	1		





325' FIELD (BRONCO LEAGUE)





GRASSING ALTERNATES  
AREA (OVERSEED)  
(4,625 SQ YD)

FIELD 2  
(225' BASEBALL FIELD)

TYPICAL 225' FIELD (DIXIE YOUTH  
LEAGUE)

SAND CLAY  
AREA =  
1070 SY  
ASSUME 4" OF SAND CLAY